



INSTALL TIME: 30 mins



1

GET ORGANIZED

you will need:

- ☐ a drill
- ☐ a 13mm drill bit
- ☐ a socket wrench and extension
- ☐ a 16mm & 18mm socket
- ☐ a 16mm & 18mm flat wrench

...CONT'D

IMPORTANT WARNING!

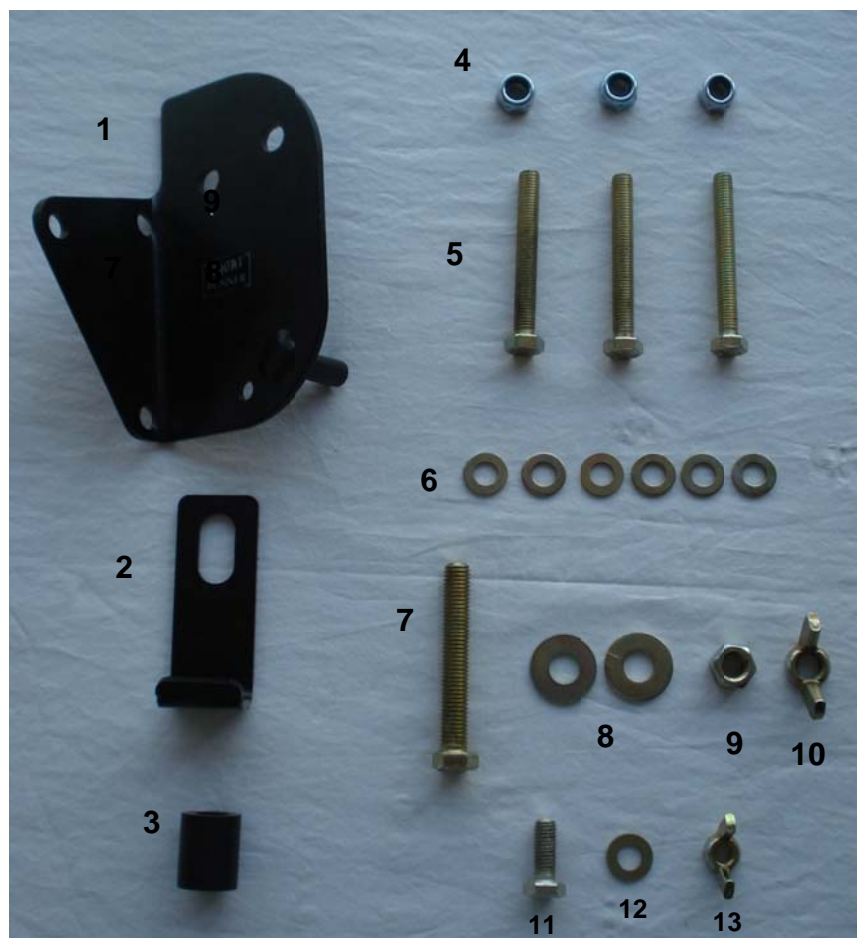
IT IS CRITICAL THAT ALL FRONT RUNNER RACKS AND ACCESSORIES BE PROPERLY AND SECURELY ATTACHED TO YOUR VEHICLE. IMPROPER ATTACHMENT COULD RESULT IN AN AUTOMOBILE ACCIDENT, AND COULD CAUSE SERIOUS BODILY INJURY OR DEATH TO YOU OR TO OTHERS. YOU ARE RESPONSIBLE FOR SECURING THE RACKS AND ACCESSORIES TO YOUR CAR, CHECKING THE ATTACHMENTS PRIOR TO USE, AND PERIODICALLY INSPECTING THE PRODUCTS FOR ADJUSTMENT, WEAR, AND DAMAGE. THEREFORE, YOU MUST READ AND UNDERSTAND ALL OF THE INSTRUCTIONS AND CAUTIONS SUPPLIED WITH YOUR FRONT RUNNER PRODUCT PRIOR TO INSTALLATION OR USE. IF YOU DO NOT UNDERSTAND ALL OF THE INSTRUCTIONS AND CAUTIONS, OR IF YOU HAVE NO MECHANICAL EXPERIENCE AND ARE NOT THOROUGHLY FAMILIAR WITH THE INSTALLATION PROCEDURES, YOU SHOULD HAVE THE PRODUCT INSTALLED BY A PROFESSIONAL INSTALLER SUCH AS A QUALIFIED GARAGE OR AUTO BODY SHOP.

1

GET ORGANISED

...CONT'D

Here is what you will receive with your kit...



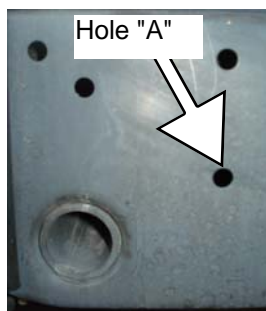
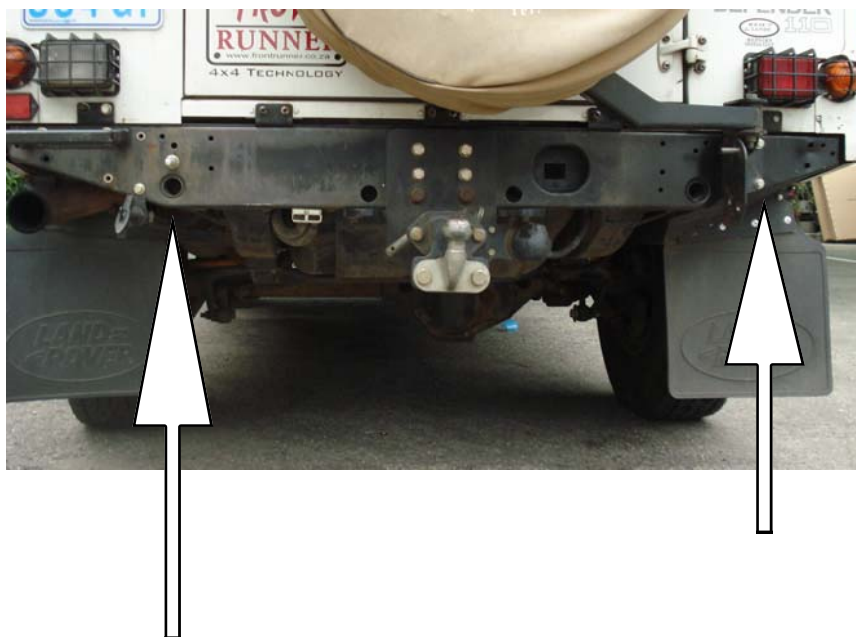
1. 1 x Right hand mounting plate
2. 1 x Stop plate
3. 1 x Nylon spacer
4. 3 x M10 nyloc hex nuts
5. 3 x M10 bolts
6. 6 x M10 flat washers
7. 1 x M12 bolt
8. 2 x M12 flat washers
9. 1 x M12 hex nut
10. 1 x M12 wing nut
11. 1 x M10 bolt
12. 1 x M10 washer
13. 1 x M10 wing nut

A)

Familiarize yourself with the parts and then step away from the work area and read through these instructions from beginning to end. Grab a cup of coffee and take a moment. A little prep now may save you a lot of time later

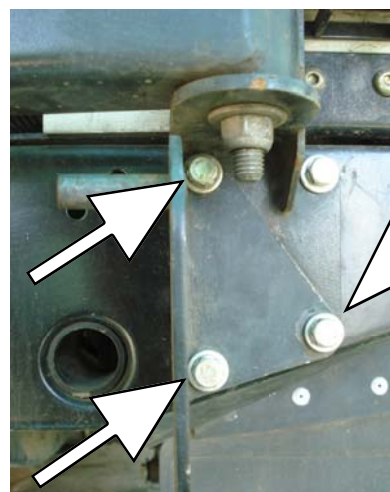
2

MOUNTING YOUR BRACKETS



A)

Using the drill and 13mm bit, enlarge hole "A" to 13mm. From the rear of the hole, insert the M12 bolt and flat washer (items 7 & 8). Using the socket wrench, 18mm socket and flat wrench fasten the M12 washer and hex nut to the bolt (item 7, 8 & 9)



B)

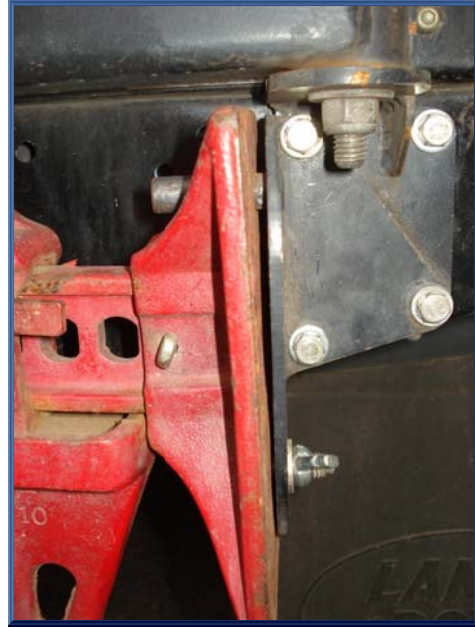
Line up the three mounting holes of the right hand mounting plate (item 1) with the 3 holes in the chassis. From the front insert the M10 bolts and washers (items 5 & 6) through the plate and chassis. Using the socket wrench, 16mm socket and flat wrench fasten the remaining M10 washers and the M10 nyloc hex nuts to the bolts. (items 4, 5 & 6)

3

MOUNTING YOUR HI LIFT JACK

A)

Slide the nyloc spacer (item 3) over the M12 bolt. Mount the foot of the jack onto the locating pin on the mounting plate. Push the left hand side of the jack onto the M12 bolt. Slide on the stop plate (item 2) and fasten with the M12 wing nut (item 10). on the right hand side secure the foot of the jack to the mounting plate using the M10 bolt, washer and wing nut (items 11,12,13).



4

CHECK FOR OTHER COOL ACCESSORIES

Now's the time to take a trip to your dealer or visit www.FRONTRUNNER.CO.ZA

5

TAKE A TRIP

A)

After your first adventure, check the tension on all the bolts and screws and re-tighten where needed. You'll find a small amount of settling has happened.

B)

Go on many more adventures. Periodically check the bolts- it's always wise to double check your fasteners once in a while.

➡ **Modifying your vehicle involves some risks and may void certain aspects of your vehicle's warranty.**

© 2011 Front Runner Outfitters, Inc.