

READ ME ! ⚠

Thank you for purchasing a Quick Release 270 Degree Awning Bracket.

Before you start, take a moment to familiarize yourself with the Fitting Instructions and the included components.

Refer to Page 2 for a list of all the components, quantities and tools required.

IMPORTANT WARNING! ⚠

IT IS CRITICAL THAT ALL FRONT RUNNER PRODUCTS BE PROPERLY AND SECURELY ASSEMBLED AND ATTACHED TO YOUR VEHICLE. IMPROPER ATTACHMENT COULD RESULT IN AN AUTOMOBILE ACCIDENT, AND COULD CAUSE SERIOUS BODILY INJURY OR DEATH. YOU ARE RESPONSIBLE FOR ASSEMBLING AND SECURING ALL FRONT RUNNER PRODUCTS TO YOUR VEHICLE, CHECKING THE ATTACHMENTS PRIOR TO USE, AND PERIODICALLY INSPECTING THE PRODUCTS FOR ADJUSTMENT, WEAR AND DAMAGE. THEREFORE, YOU MUST READ AND UNDERSTAND ALL OF THE INSTRUCTIONS AND PRECAUTIONS SUPPLIED WITH YOUR FRONT RUNNER PRODUCT PRIOR TO INSTALLATION OR USE. IF YOU DO NOT UNDERSTAND ALL OF THE INSTRUCTIONS AND CAUTIONS, OR IF YOU HAVE NO MECHANICAL EXPERIENCE AND ARE NOT THOROUGHLY FAMILIAR WITH THE INSTALLATION PROCEDURES, YOU SHOULD HAVE THE PRODUCT INSTALLED BY A PROFESSIONAL INSTALLER OR OTHER QUALIFIED PERSONNEL.

NOTE: Front Runner will not be responsible for any damage caused by the failure to install the product according to these instructions.

Please call us if you have any questions about the installation of this product.

1

GET ORGANIZED

IN THE BOX

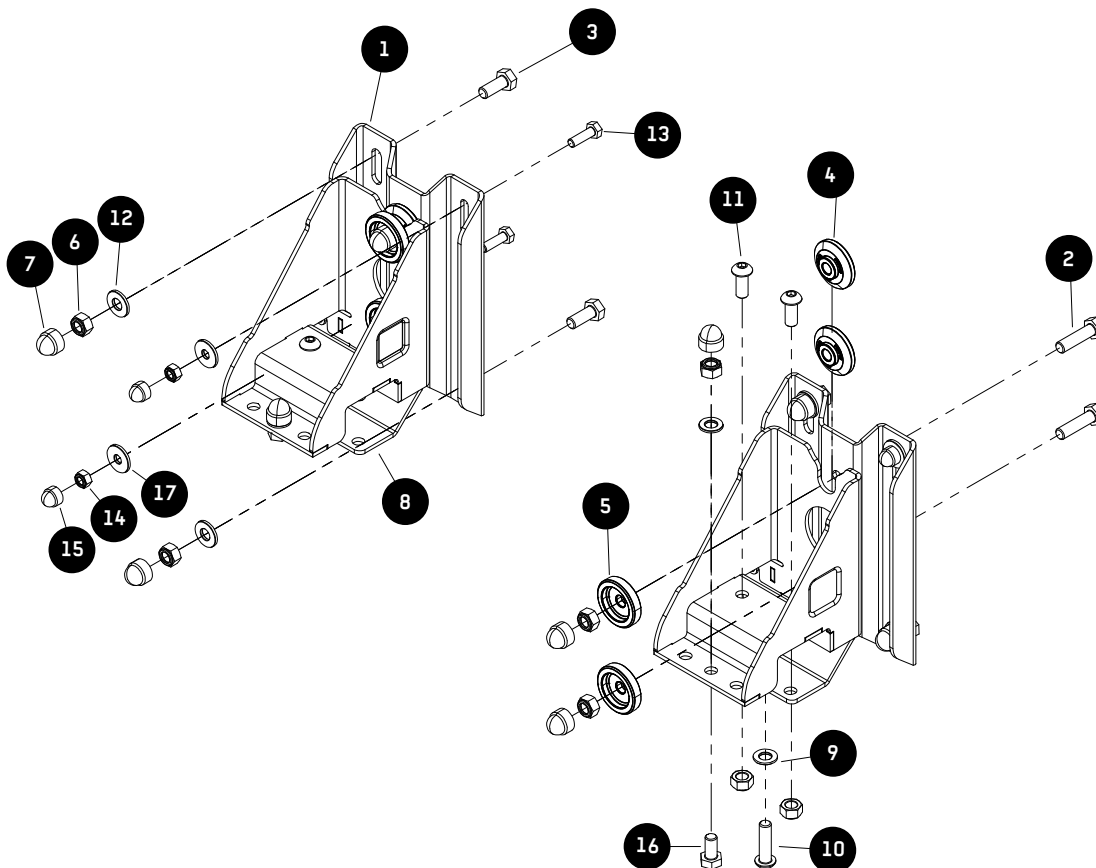
1	2 X	Latch Plate Assembly
2	4 X	M8 x 30 Hex Bolt
3	4 X	M8 x 20 Hex Bolt
4	4 X	Bobbin - Male
5	2 X	Bobbin - Female
6	14 X	M8 Nyloc Nut
7	10 X	M8 Nut Cap
8	2 X	Base Bracket Assembly
9	4 X	M8 x 16 x 1.6 Flat Washer
10	2 X	M8 x 30 Button Head Bolt
11	4 X	M8 x 20 Button Head Bolt
12	4 X	M8 x 19 x 2 Flat Washer
13	4 X	M6 x 20 Hex Bolt
14	4 X	M6 Nyloc Nut
15	4 X	M6 Nut Cap
16	2 X	M8 x 16 Hex Bolt
17	4 X	M6 x 20 x 2 Flat Washer

TOOLS NEEDED

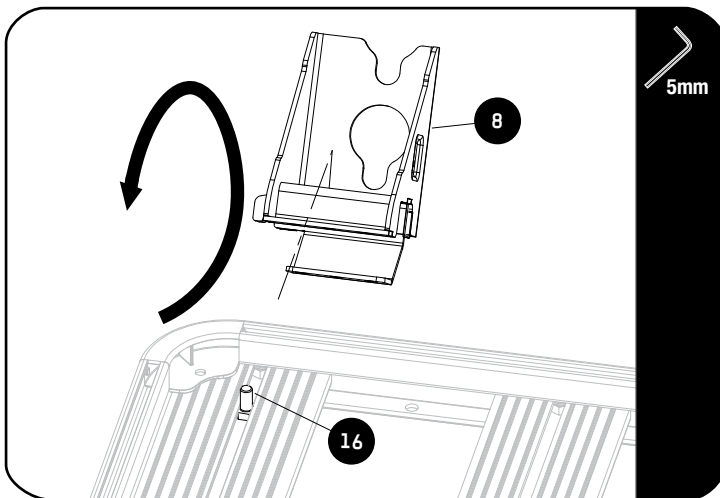


Friend

FIGURE 1.1



2.1



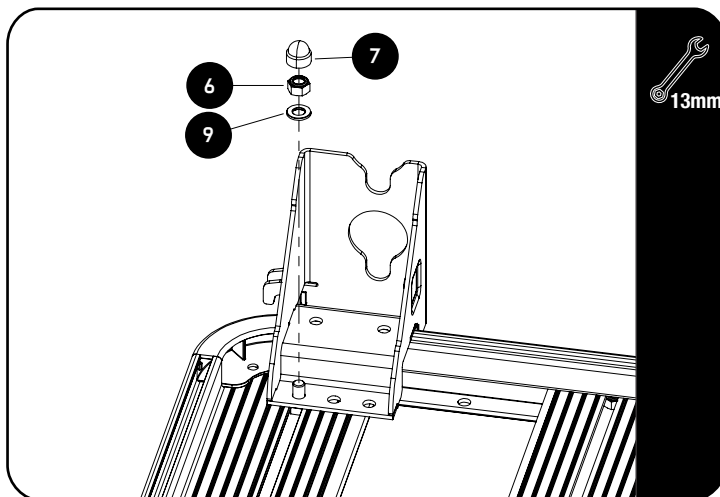
Start by selecting the side of the vehicle, where you want to mount your awning as well as where the pivot point of the awning should be, for either a LH or RH awning.

Remove the Button Head Bolt that secures the Combined Slat to the Side Profile on the Bottom of the SLII Tray (Refer Fig 2.5). Slide one M8 x 16 Hex Bolt (Item 16) into the T-Slot of the Combined Slat. Slide the Base Bracket Assembly (Item 8) onto this Hex Bolt by holding it at an angle against the side profile and rotating it over the Bolt, as shown. When mounting to the Combined Slat, use the outer holes of the Base Bracket.



Note: It is advised to always use the Combined Slats to mount the front and rear brackets, where possible.

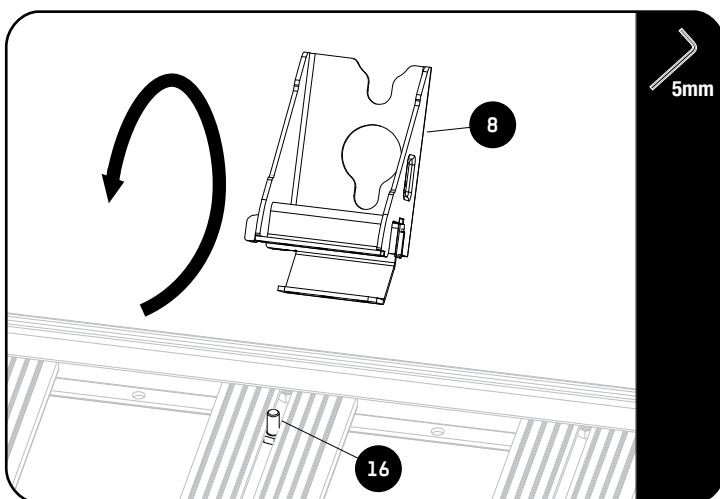
2.2



Loosely assemble the Base Bracket Assembly to the Combined Slat using a M8 x 16 x 1.6 Flat Washer and a M8 Nyloc Nut (Items 9 & 6).

Do Not Tighten fasteners yet.

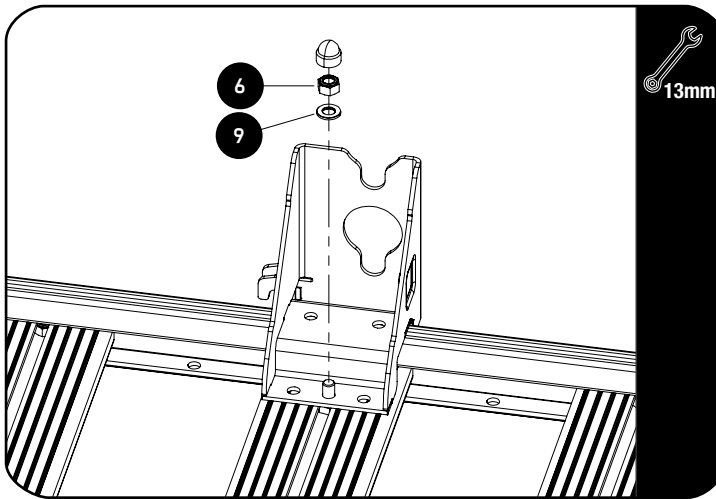
2.3



Select the a Slat best suited to the length of your awning.

Remove the Button Head Bolt that secures the Slat to the Side Profile on the Bottom of the SLII Tray, in the same way you did in Step 2.1. Slide one M8 x 16 Hex Bolt (Item 16) into the T-Slot of the Slat. Slide the Base Bracket Assembly (Item 8) onto this Hex Bolt by holding it at an angle against the side profile and rotating it over the Bolt, as shown. When mounting to a Standard Slat, use the middle holes of the Base Bracket.

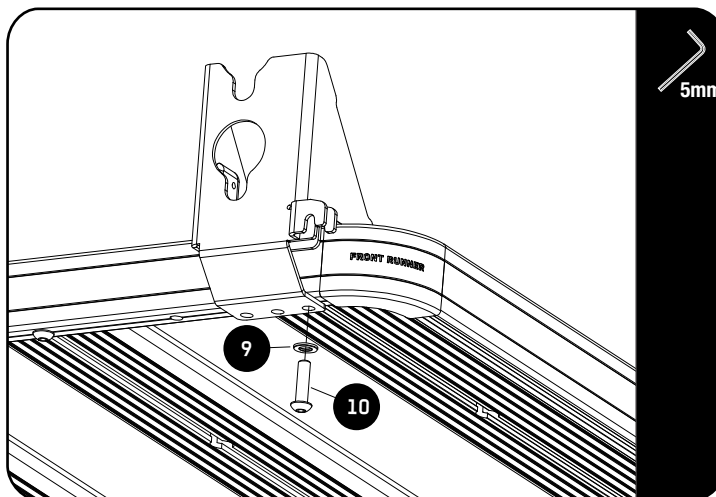
2.4



Loosely assemble the Base Bracket Assembly to the Standard Slat using a M8 x 16 x 1.6 Flat Washer and a M8 Nyloc Nut (Items 9 & 6).

Do not fully tighten fasteners.

2.5

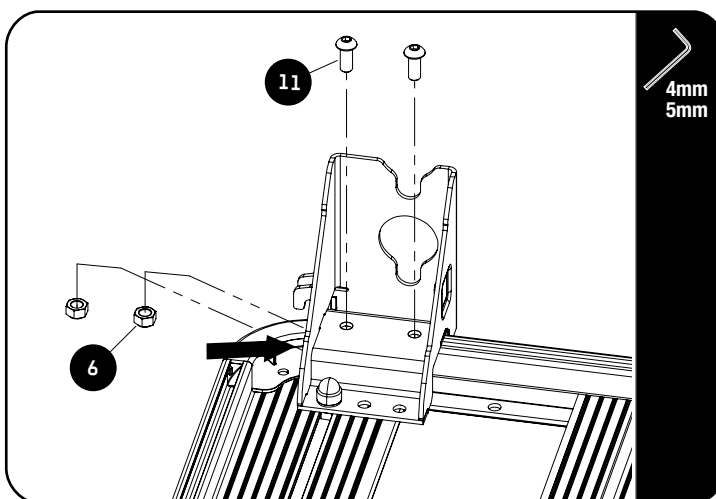


Loosely assemble the Base Bracket Assembly to the underside of the Combined Slat using a M8 x 16 x 1.6 Flat Washer and a M8 x 30 Button Head Bolt (Items 9 & 10).

Repeat this step for the remaining Bracket on the Standard Slat using the middle hole.

Do Not Tighten fasteners yet.

2.6



Slide two M8 Nyloc Nuts (Item 6), flat side up, into the side profile and align with the holes, as shown. Secure the Base Bracket using two M8 x 20 Button Head Bolts (Item 11). The rack corner can be removed if necessary - to allow more access - by loosening the M6 button head using a 4mm allen key.

Repeat this step for the remaining Base Bracket.

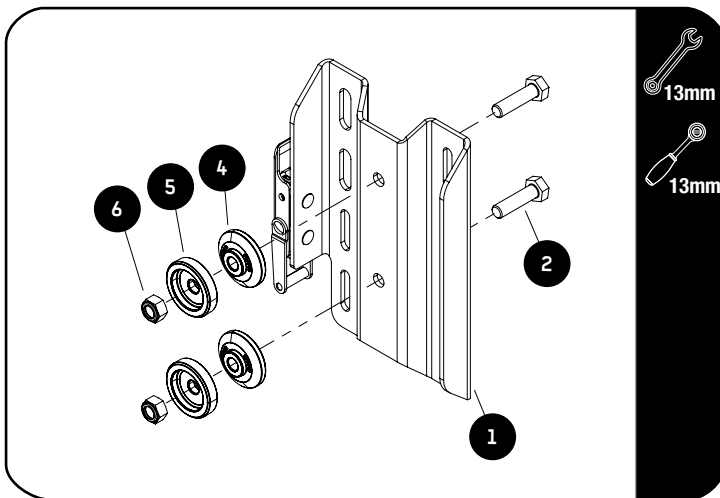
Tighten all fasteners and place M8 Nut Caps (Item 7) over the two Hex Bolts.



Tightening Torque:

M8 : 15-20Nm / 11.06 ft lb - 14.75 ft lb

2.7



On a suitable, flat surface, loosely assemble the Latch Plate Assembly (Item 1) using two M8 x 30 Hex Bolts, Male Bobbins, Female Bobbins and M8 Nyloc Nuts (Items 2, 4, 5 & 6), as shown.

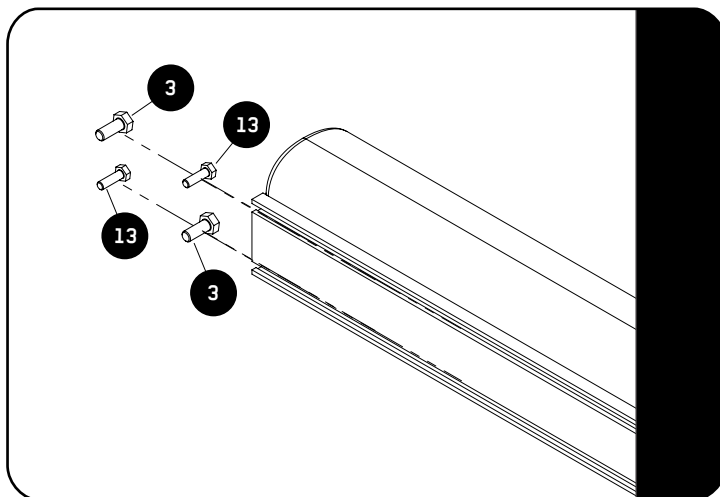
Do this with both Latch Plate Assemblies.



Note the orientation of the Bobbins and the Latch Plate during assembly.

Do not overtighten, the bobbins should still rotate freely.

2.8

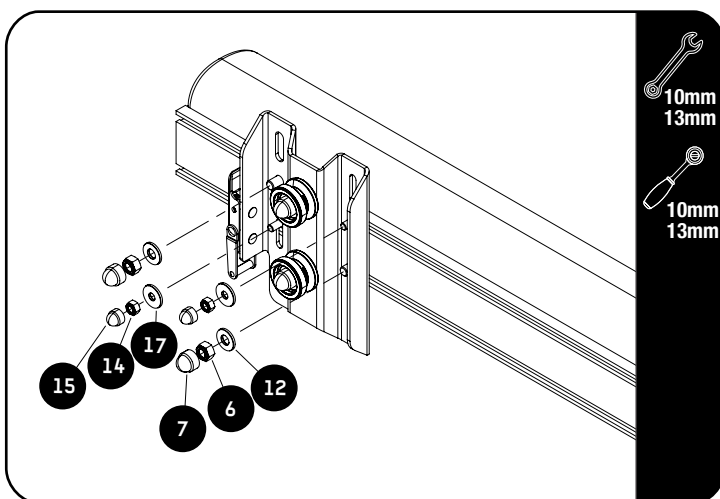


Slide either two M6 x 20 Hex Bolts OR M8 x 20 Hex Bolts (Items 13 OR 3) into the top and bottom Slots of the Awning Mounting Extrusion.



The size of Bolts, Nuts and Washers will depend on the size of the T-Slot of your Awning. Make sure to measure the size before inserting the fasteners.

2.9



Choose the height best suited for the awning and align the bolts with the appropriate slots on the Latch Plate Assembly (Item 1).

If M8 Bolts were used, loosely assemble diagonally using M8 x 19 x 2 Flat Washers and M8 Nyloc Nuts (Items 12 & 6).

If M6 Bolts were used, loosely assemble diagonally using M6 x 20 x 2 Flat Washers and M6 Nyloc Nuts (Items 17 & 14).

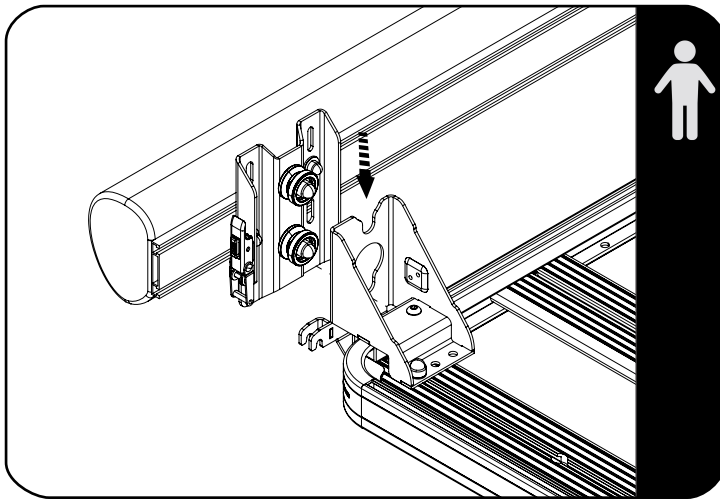


Make sure that the Latch Plates are level to the Awning Mounting Extrusion.

2

FIT AND SECURE

2.10

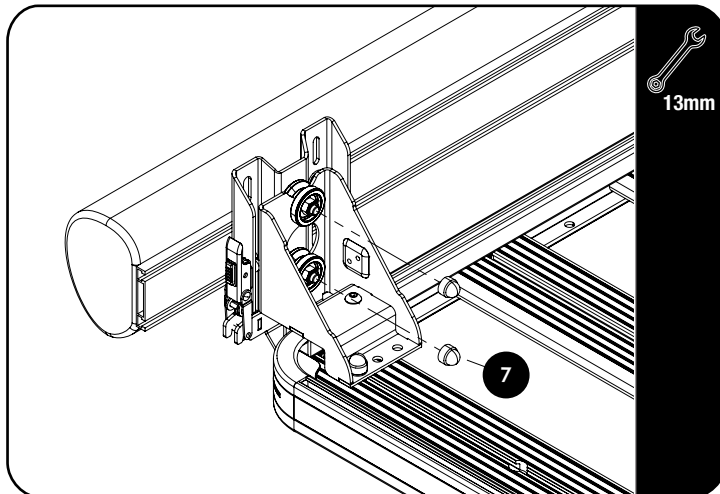


Ask a friend for help to lift the awning into place. Align the Bobbins (Items 4 & 5) with the cut outs on the Base Brackets.

Slide the awning onto the Base Bracket and ensure that it is level.

Check the position and clearance by opening the awning to ensure it sits correctly on the back of the rack when opened.

2.11



Take up any extra play on each set of Bobbins (Items 4 & 5), if necessary. **DO NOT OVERTIGHTEN.**

Latch the Bracket and Awning together.

Tighten all fasteners.



Tightening Torque:

M6 : 8-10Nm / 5.9 ft lb - 7.38 ft lb

M8 : 15-20Nm / 11.06 ft lb - 14.75 ft lb

Place M8 Nut Caps (Item 7) on all M8 Nyloc Nuts as shown and if M6 fasteners were used in the awning, place M6 Nut Caps on the M6 Nyloc Nuts.

3

FINISH

Congratulations! You did it. Take a step back and admire your work!

4

INSTALL OTHER VEHICLE AND RACK ACCESSORIES

Now's the time to visit your favorite Front Runner Dealer in person or online.

Be sure to tag us. We love to see our gear in action! #FrontRunnerOutfitters

Share your adventures on:

