**READ ME !** ⚠

Thank you for purchasing your Front Runner Roof Rack Hammock Holder.

Before you start, take a moment to familiarize yourself with the Fitting Instructions and the included components.

Refer to Page 2 for a list of all the components, quantities and tools required.

IMPORTANT WARNING! ⚠

IT IS CRITICAL THAT ALL FRONT RUNNER PRODUCTS BE PROPERLY AND SECURELY ASSEMBLED AND ATTACHED TO YOUR VEHICLE. IMPROPER ATTACHMENT COULD RESULT IN AN AUTOMOBILE ACCIDENT, AND COULD CAUSE SERIOUS BODILY INJURY OR DEATH. YOU ARE RESPONSIBLE FOR ASSEMBLING AND SECURING ALL FRONT RUNNER PRODUCTS TO YOUR VEHICLE, CHECKING THE ATTACHMENTS PRIOR TO USE, AND PERIODICALLY INSPECTING THE PRODUCTS FOR ADJUSTMENT, WEAR AND DAMAGE. THEREFORE, YOU MUST READ AND UNDERSTAND ALL OF THE INSTRUCTIONS AND PRECAUTIONS SUPPLIED WITH YOUR FRONT RUNNER PRODUCT PRIOR TO INSTALLATION OR USE. IF YOU DO NOT UNDERSTAND ALL OF THE INSTRUCTIONS AND CAUTIONS, OR IF YOU HAVE NO MECHANICAL EXPERIENCE AND ARE NOT THOROUGHLY FAMILIAR WITH THE INSTALLATION PROCEDURES, YOU SHOULD HAVE THE PRODUCT INSTALLED BY A PROFESSIONAL INSTALLER OR OTHER QUALIFIED PERSONNEL.

NOTE: Front Runner will not be responsible for any damage caused by the failure to install the product according to these instructions.

Please call us if you have any questions about the installation of this product.

1

GET ORGANIZED

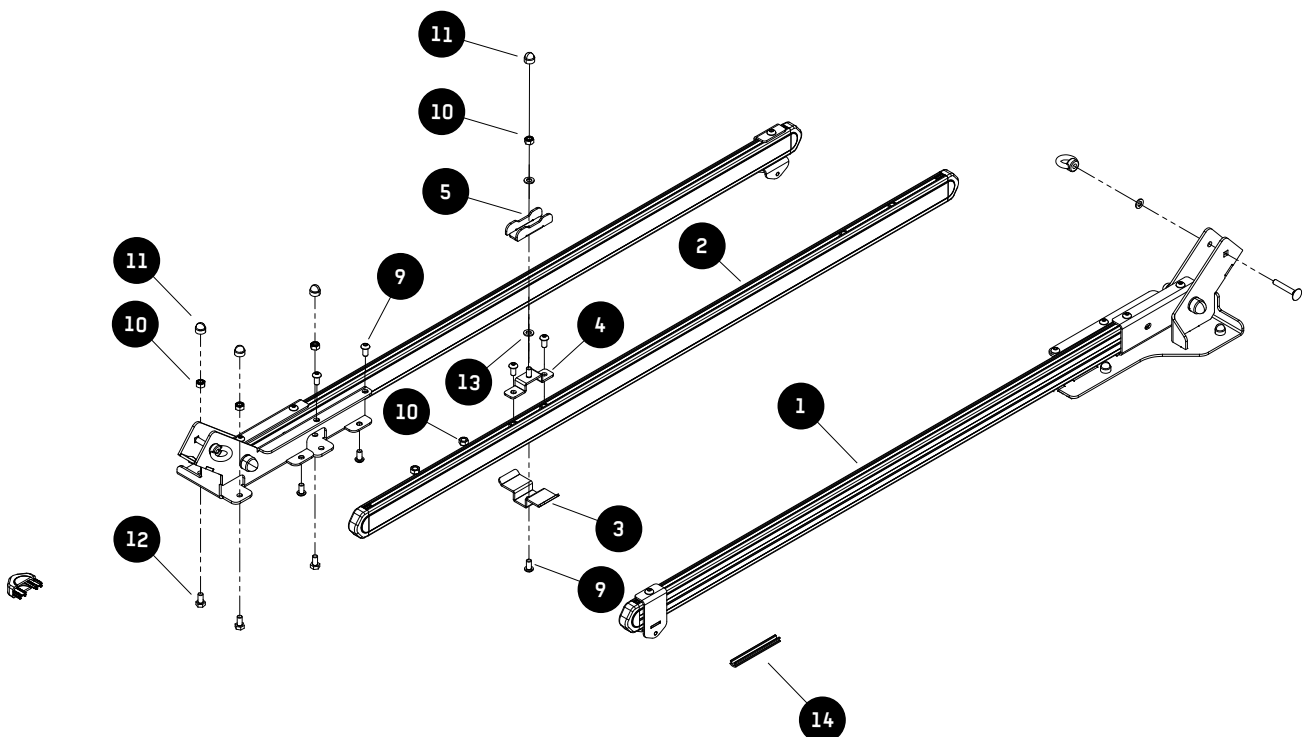
IN THE BOX

1	2 X	Hammock Arm
2	1 X	Base Support
3	1 X	Bottom Clamp
4	1 X	Top Clamp
5	1 X	Clamp Lock
6	2 X	Base Crossbar
7	2 X	Spacer
8	6 X	End Cap
9	11 X	M8x16 Button Head Bolt
10	18 X	M8 Nyloc Nut
11	7 X	M8 Nut Cap
12	6 X	M8x16 Hex Bolt
13	1 X	M8 Nylon Washer
14	2 X	T - Slot Rubber - 100mm Long

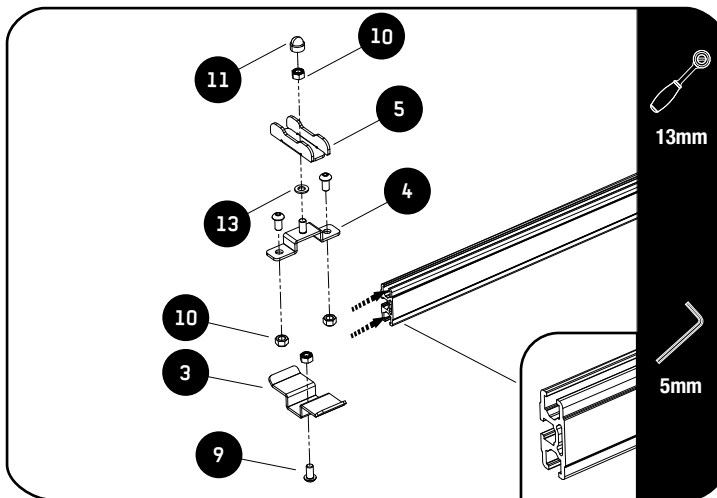
TOOLS NEEDED



FIGURE 1.1



2.1



Slide three M8 Nyloc Nuts (Item 10) into the Base Support (Item 2), two into the top t-slot and one into the bottom.

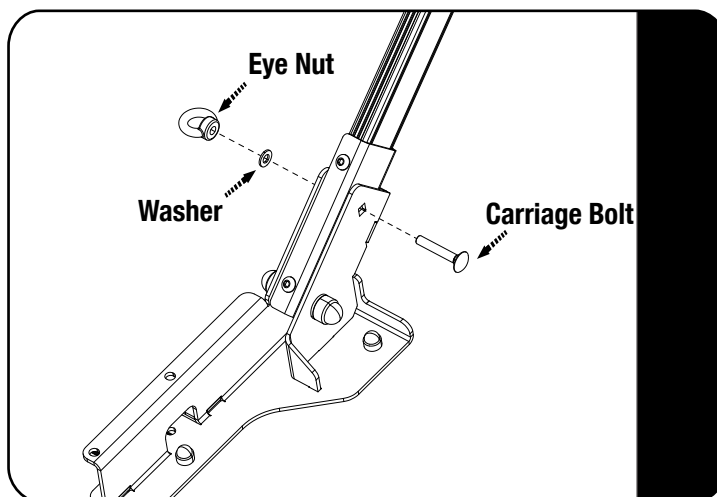
Loosely fit the Top and Bottom Clamp (Items 3 & 4) to the Base Support using M8 Button Head Bolts and the Nyloc nuts in the t-slots.

Place the M8 Nylon Washer (Item 13) over the stud in the Top Clamp before securing the the Clamp Lock (Item 5) using an M8 Nyloc Nut. (Items 10).

Tighten the M8 Nut so the the Clamp Lock can still be turned by hand.

Place a M8 Nut Cap (Item 11) on the Nyloc Nut.

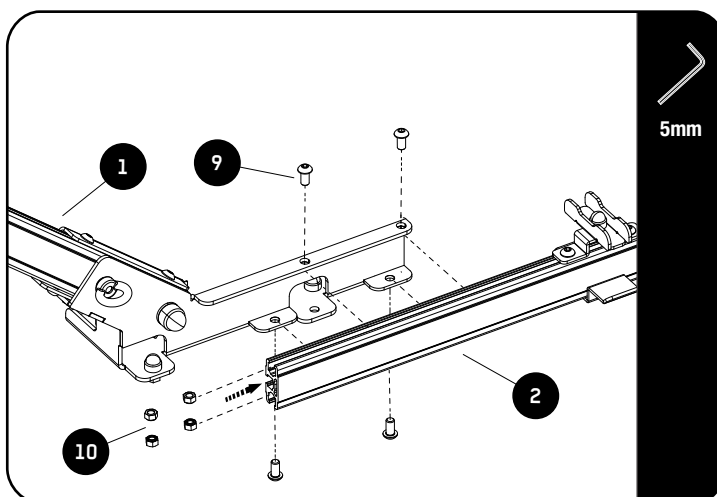
2.2



Loosen the Carriage Bolt and Eye Nut before opening the Hammock Arm.

Refit the Carriage Bolt with Washer and Eye Nut to secure the Arm in place.

2.3

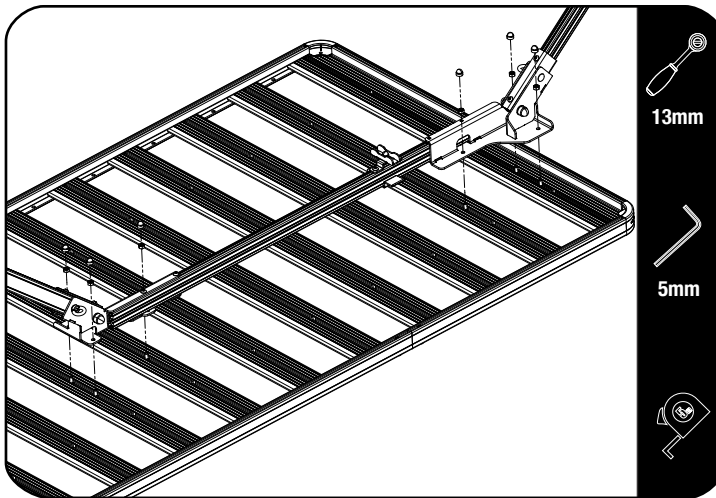


Slide four M8 Nyloc Nuts (Item 10) into the Base Support (Item 2), two into the top t-slot and two into the bottom.

Loosely fit the Hammock Arm Assemblies (Item 1) to the Base Support (Item 2) using M8 Button Head Bolts (Item 9) and the Nyloc nuts in the t-slots.

FIT AND SECURE TOO YOUR FRONT RUNNER TRAY

2.4



Slide M8 Hex Bolts (Item 12) as shown into the slats t-slot where indicated.

Secure using M8 Nyloc Nuts (Item 10).

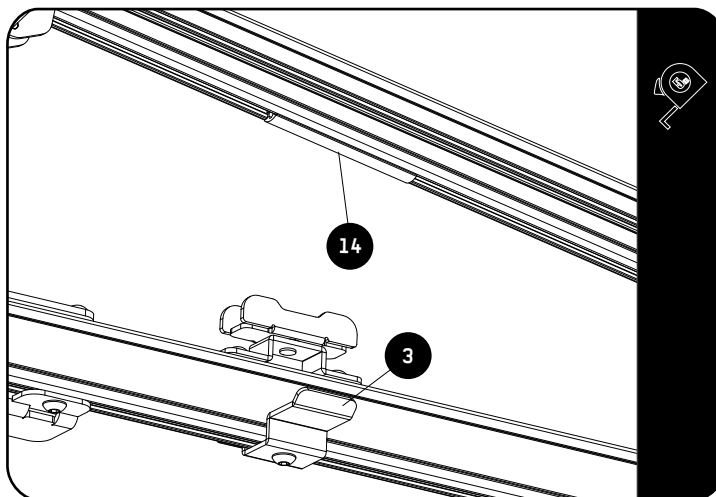
Fully tighten the M8 Button Head Bolts from 2.3.

Place M8 Nut Caps (Item 11) on all the Nyloc Nuts.

NOTE: The standard Hammock Holder will fit on Trays that are 8 or 9 Slats long.

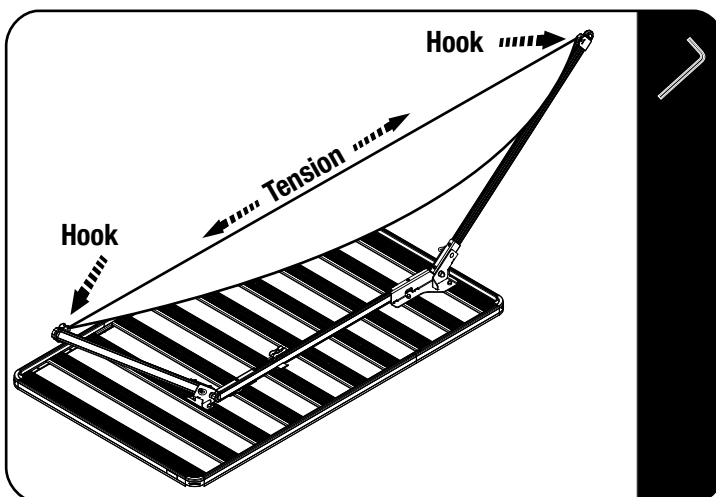
If needed the Base Support can be trimmed by 202mm to fit a 7 Slat tray. Please check if your hammock length will be suitable for this option.

2.5



Insert T-Slot Rubber (Item 14) into the Arms at the position where the Arm will be cradled by the Bottom Clamp (Item 3).

2.6



Open the Hammock Arms and secure in place with the Carriage Bolts, Washers and Eye Nuts. Refer to 2.2.

Secure your hammock onto the hook ends of the Hammock Arms.

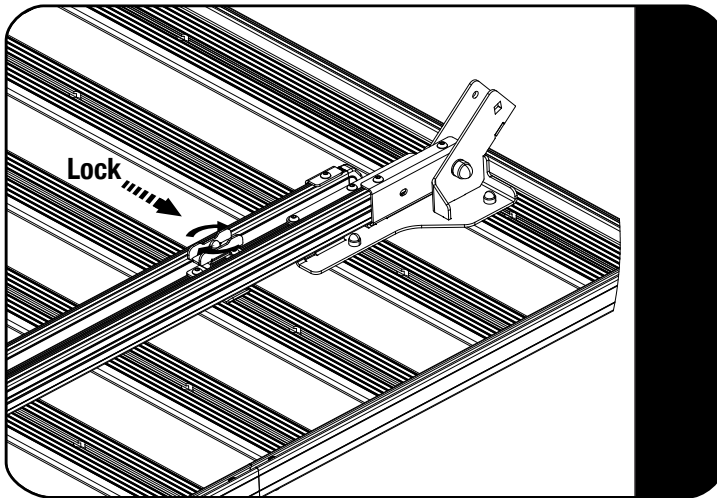


Ensure that all the fasteners are fully tight and there's enough tension on the hammock before use.

2

FIT AND SECURE

2.7



When in transit, close the Hammock Arms and lock in place with the Clamp Lock. See comment in 2.1.



Store the Carriage bolt with Eye Nut and Washer in a safe place.

4

COMPLETION

4.1

Congratulations! You did it. Take a step back and admire your work!



5

INSTALL OTHER VEHICLE AND RACK ACCESSORIES

Now's the time to visit your favorite Front Runner dealer in person or online.

IMPORTANT!

FRONT RUNNER RACK KITS OFTEN HAVE A HIGHER LOAD RATING THAN THE VEHICLES THEY ARE MOUNTED TO. PLEASE REFER TO YOUR SPECIFIC VEHICLE MANUFACTURER FOR A RECOMMENDED ROOF RATING. FRONT RUNNER CANNOT BE RESPONSIBLE FOR IMPROPER LOADING BEYOND THE VEHICLE MANUFACTURER'S STATED LOAD CAPACITY.

Be sure to tag us. We love to see our gear in action! #FrontRunnerOutfitters #BornToRoam

Share your adventures on: