**READ ME !** ⚠

Thank you for purchasing a Roller System.

Before you start, take a moment to familiarize yourself with the Fitting Instructions and the included components.

Refer to Page 2 for a list of all the components, quantities and tools required.

IMPORTANT WARNING! ⚠

IT IS CRITICAL THAT ALL FRONT RUNNER PRODUCTS BE PROPERLY AND SECURELY ASSEMBLED AND ATTACHED TO YOUR VEHICLE. IMPROPER ATTACHMENT COULD RESULT IN AN AUTOMOBILE ACCIDENT, AND COULD CAUSE SERIOUS BODILY INJURY OR DEATH. YOU ARE RESPONSIBLE FOR ASSEMBLING AND SECURING ALL FRONT RUNNER PRODUCTS TO YOUR VEHICLE, CHECKING THE ATTACHMENTS PRIOR TO USE, AND PERIODICALLY INSPECTING THE PRODUCTS FOR ADJUSTMENT, WEAR AND DAMAGE. THEREFORE, YOU MUST READ AND UNDERSTAND ALL OF THE INSTRUCTIONS AND PRECAUTIONS SUPPLIED WITH YOUR FRONT RUNNER PRODUCT PRIOR TO INSTALLATION OR USE. IF YOU DO NOT UNDERSTAND ALL OF THE INSTRUCTIONS AND CAUTIONS, OR IF YOU HAVE NO MECHANICAL EXPERIENCE AND ARE NOT THOROUGHLY FAMILIAR WITH THE INSTALLATION PROCEDURES, YOU SHOULD HAVE THE PRODUCT INSTALLED BY A PROFESSIONAL INSTALLER OR OTHER QUALIFIED PERSONNEL.

NOTE: Front Runner will not be responsible for any damage caused by the failure to install the product according to these instructions.

Please call us if you have any questions about the installation of this product.

1

GET ORGANIZED

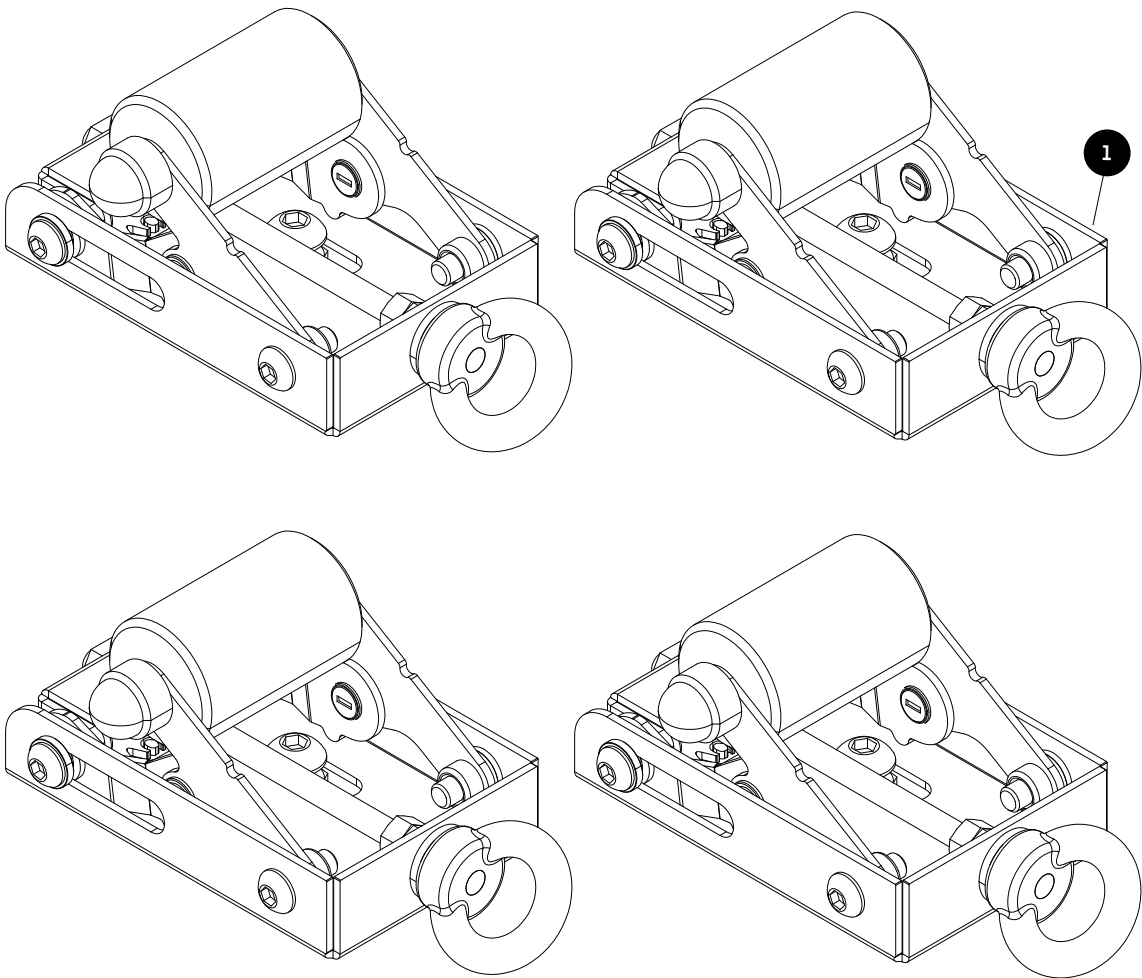
IN THE BOX

1	1 X	Roller Assembly
---	-----	-----------------

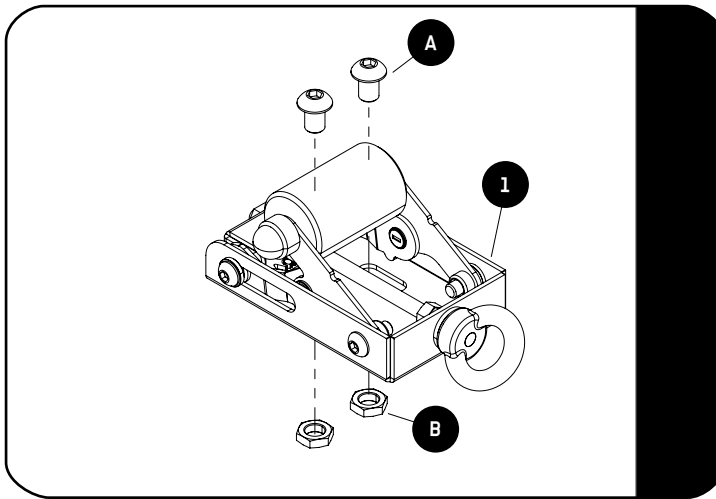
TOOLS NEEDED



FIGURE 1.1

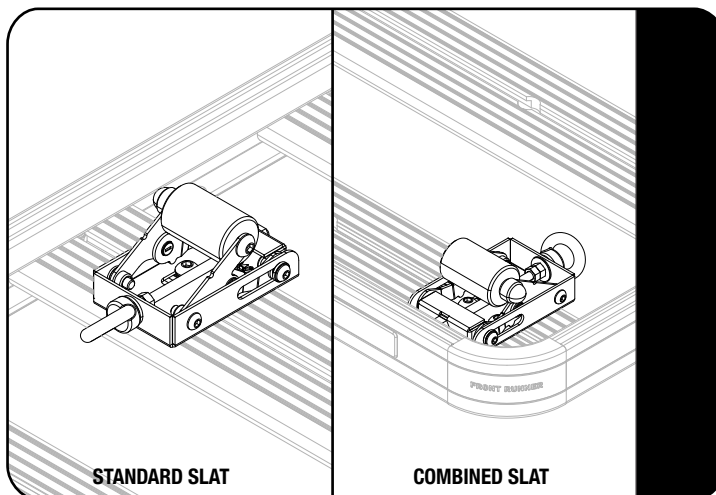


2.1



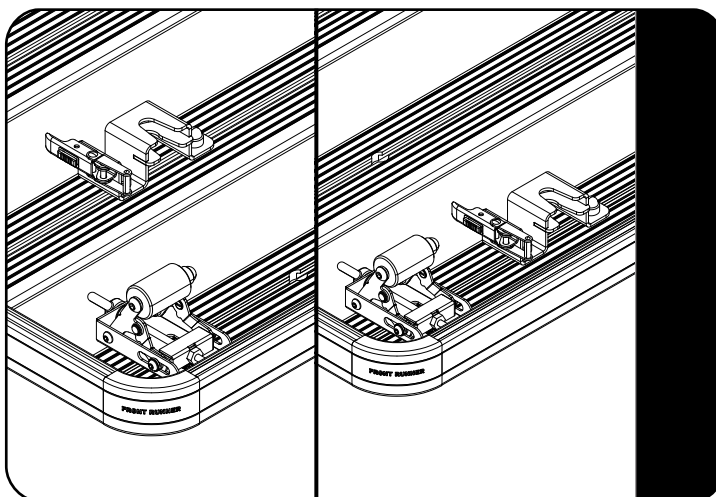
Wind the roller up or down to easily access the bottom fasteners and loosen the two M8 Button Head Bolts (A) and two M8 Thin Nuts (B) on the bottom of each Roller Assembly (Item 1)

2.2



Roller Assemblies can either be placed forward facing on a Standard Slat/Slimsport Slat or rear facing on a Combined Slat.

2.3



Rollers should be placed one slat back from each of the Quick Release Tent Mount Brackets (TBMK020 - sold separately), unless the Quick Release Brackets are mounted to the combined slat, in which case they should be mounted side by side.

Rollers should also be installed outboard of the Quick Release Brackets, for easy access.

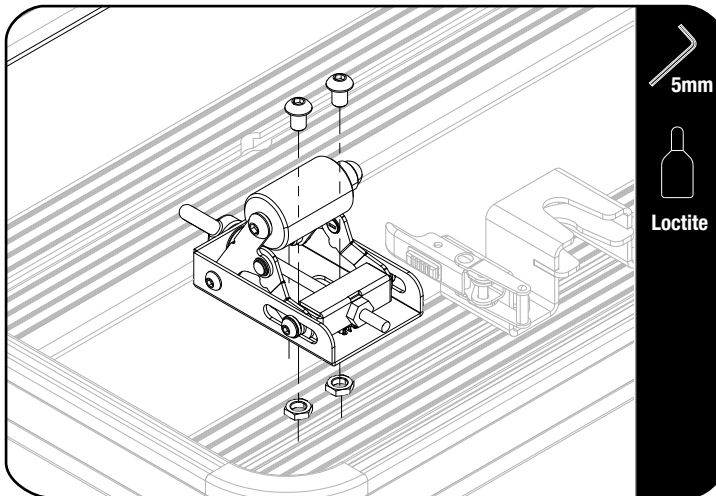


In some cases, the tent tracks will not allow for outboard mounting. If this is the case, the rollers should always be placed as wide apart as possible, to ensure that the tent remains stable when rolling.

2

FIT AND SECURE

2.4



When the mounting positions of the Roller Assemblies have been determined, slide the M8 Thin Nuts into the T-slot of the preferred Slat. Align with the slots on the bottom of the Roller Assembly, and secure using the M8 Button Head Bolts.



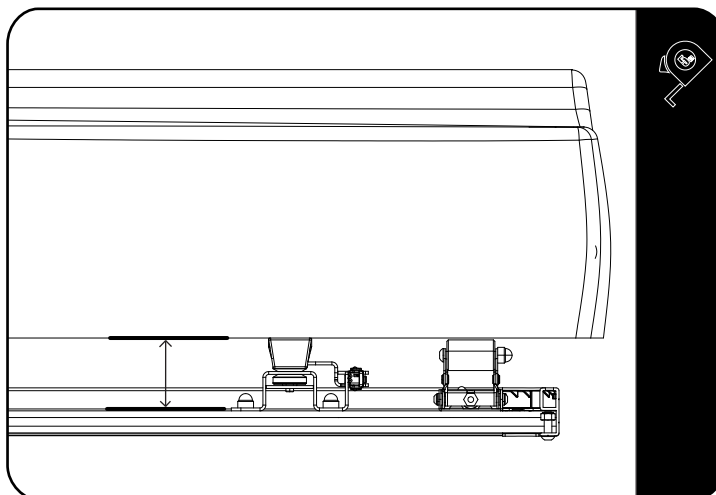
Add Loctite to each thread before securing.



Tightening Torque:

M8 : 15-20Nm / 11.06 ft lb - 14.75 ft lb

2.5



Measure the height of the channels of the tent, including the Quick Release Tent Mount Bracket - from the base of the tent to the slat - and adjust the Roller Assemblies up or down (using the Eye Bolt) to meet the measured height.

Slide the tent onto the Rollers. The height of the Rollers may be adjusted if needed. When the bottom of the tent is located on all four Rollers, you may release the tent to adjust the position and locate into the Quick Release Brackets.

3

FINISH

Congratulations! You did it. Take a step back and admire your work!

4

INSTALL OTHER VEHICLE AND RACK ACCESSORIES

Now's the time to visit your favorite Front Runner Dealer in person or online.

Be sure to tag us. We love to see our gear in action! #FrontRunnerOutfitters

Share your adventures on:

