

READ ME ! ⚠

Thank you for purchasing a Telescopic Ladder Support Bracket.

Before you start, take a moment to familiarize yourself with the Fitting Instructions and the included components.

Refer to Page 2 for a list of all the components, quantities and tools required.

IMPORTANT WARNING! ⚠

IT IS CRITICAL THAT ALL FRONT RUNNER PRODUCTS BE PROPERLY AND SECURELY ASSEMBLED AND ATTACHED TO YOUR VEHICLE. IMPROPER ATTACHMENT COULD RESULT IN AN AUTOMOBILE ACCIDENT, AND COULD CAUSE SERIOUS BODILY INJURY OR DEATH. YOU ARE RESPONSIBLE FOR ASSEMBLING AND SECURING ALL FRONT RUNNER PRODUCTS TO YOUR VEHICLE, CHECKING THE ATTACHMENTS PRIOR TO USE, AND PERIODICALLY INSPECTING THE PRODUCTS FOR ADJUSTMENT, WEAR AND DAMAGE. THEREFORE, YOU MUST READ AND UNDERSTAND ALL OF THE INSTRUCTIONS AND PRECAUTIONS SUPPLIED WITH YOUR FRONT RUNNER PRODUCT PRIOR TO INSTALLATION OR USE. IF YOU DO NOT UNDERSTAND ALL OF THE INSTRUCTIONS AND CAUTIONS, OR IF YOU HAVE NO MECHANICAL EXPERIENCE AND ARE NOT THOROUGHLY FAMILIAR WITH THE INSTALLATION PROCEDURES, YOU SHOULD HAVE THE PRODUCT INSTALLED BY A PROFESSIONAL INSTALLER OR OTHER QUALIFIED PERSONNEL.

NOTE: Front Runner will not be responsible for any damage caused by the failure to install the product according to these instructions.

Please call us if you have any questions about the installation of this product.

1

GET ORGANIZED

IN THE BOX

1	2 X	Telescopic Ladder Bracket
2	2 X	SLII Support Bracket
3	6 X	M8x16x1.6 Washer
4	6 X	M8 Nyloc Nut
5	2 X	M8 Nut Cap
6	4 X	M8x12 Button Head Bolt
7	4 X	M8x25 Button Head Bolt
8	4 X	M8 Hex Thin Nut
9	2 X	M8x16 Hex Bolt

TOOLS NEEDED

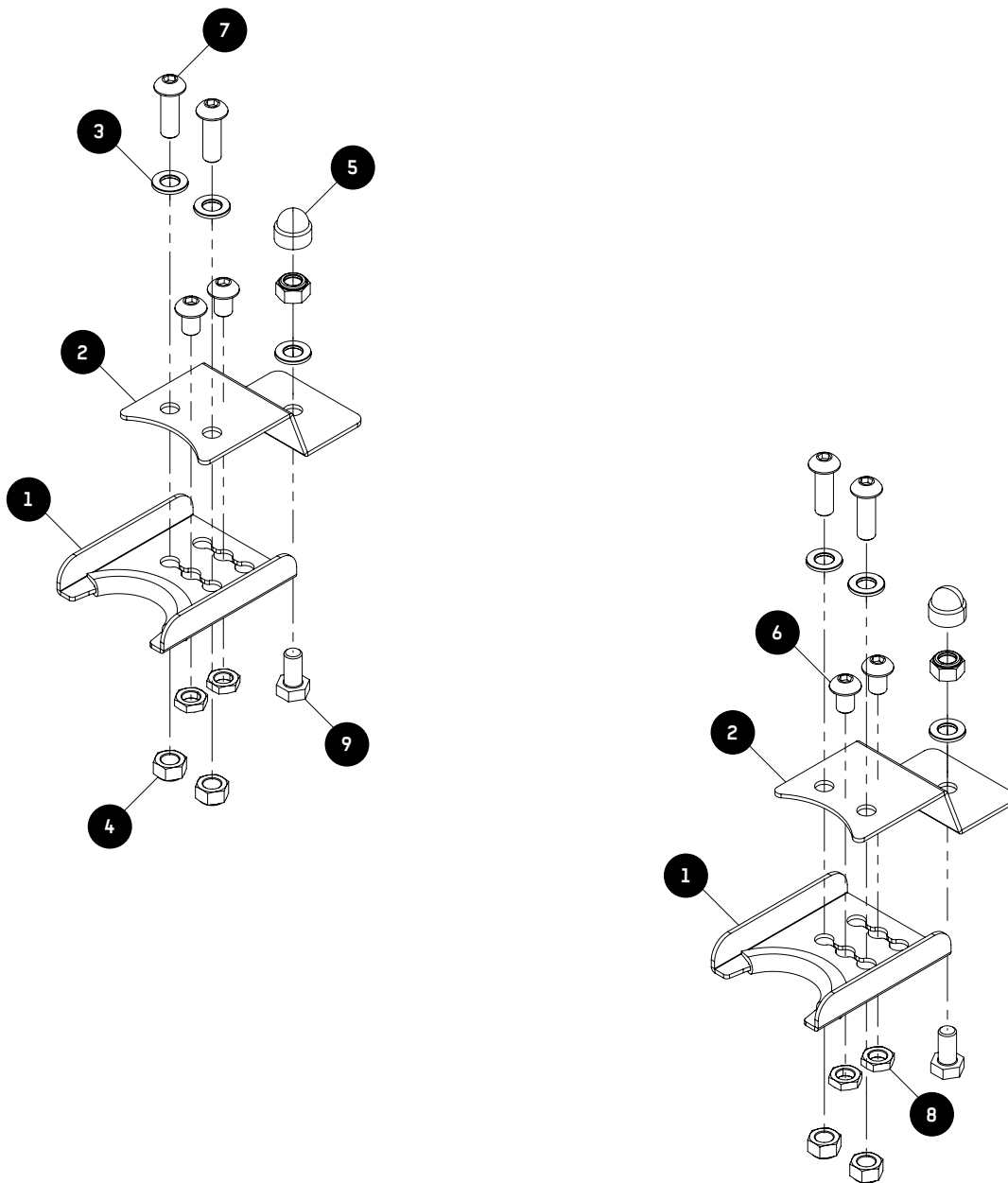


5mm

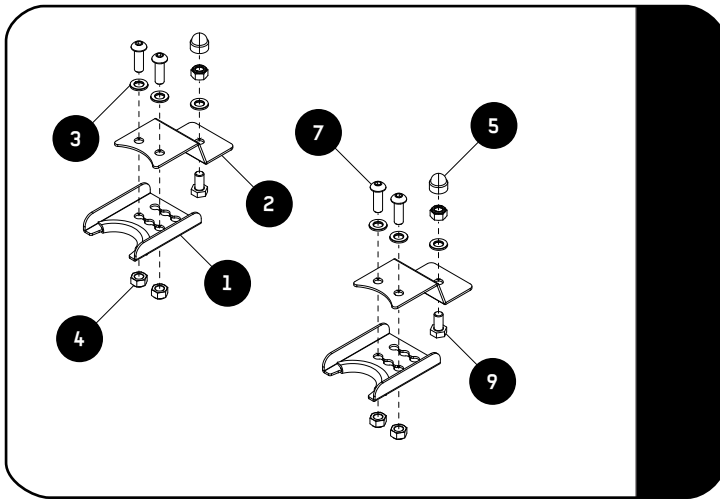


13mm

FIGURE 1.1



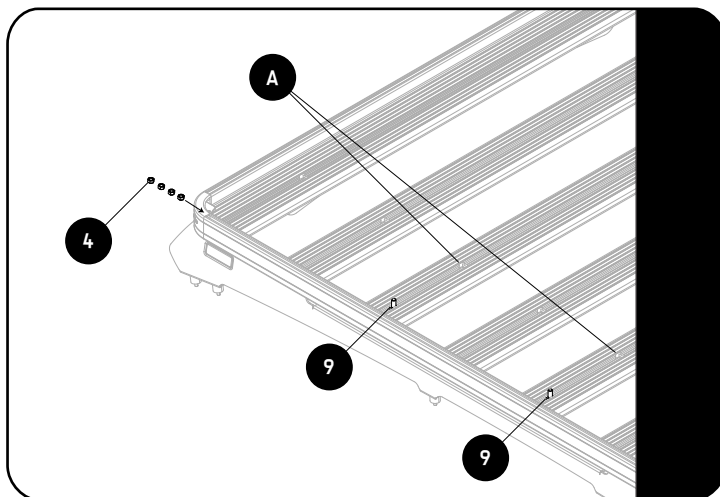
2.1

**SLII Rack Configuration - Side Mount**

Note: The fasteners & brackets to be used for a SLII rack.

This configuration is used for both side and rear mounting options.

2.2



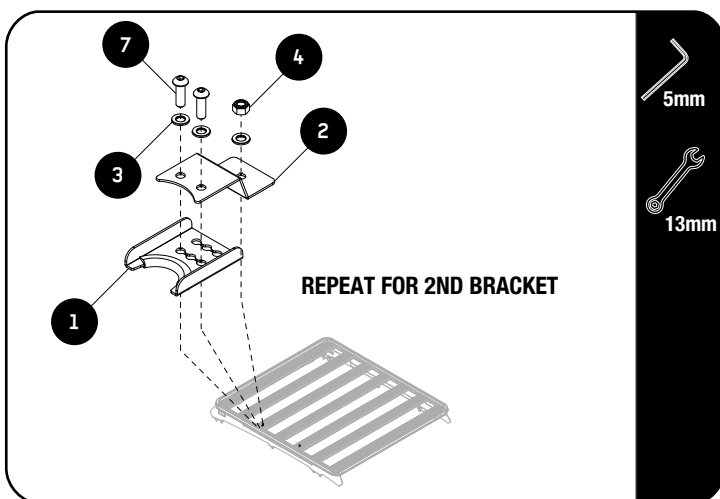
Slide one M8x16 Hex Bolt (Item 9) into the t-slot of each of the two slats through the cut out section on the slat as shown by (A), where the ladder support brackets are to be mounted.

Note: There needs to be a open slat between the M8x16 Hex Bolts (Item 9).

Slide four M8 Nyloc Nuts (Item 4) through the open pocket on the inside of the corner piece and through the slot of the side profile, with the nylon ring facing downwards.

Note: Use an Allen Key to position the M8 Nyloc Nuts (Item 4) along the side profile.

2.3



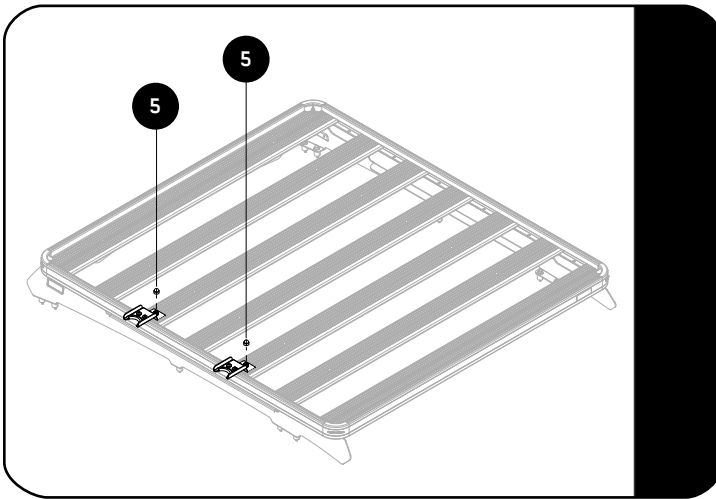
Assemble the Telescopic Ladder Bracket and the SLII Support Bracket (Item 1 & 2) as shown by tightening the M8x25 Button head Bolts, M8x16x1.6 Washers and the M8 Nyloc Nut (Item 3, 4 & 7).

Repeat for both pairs of brackets.

**Tightening Torque:**

M8 : 15-20Nm / 11.06 ft lb - 14.75 ft lb

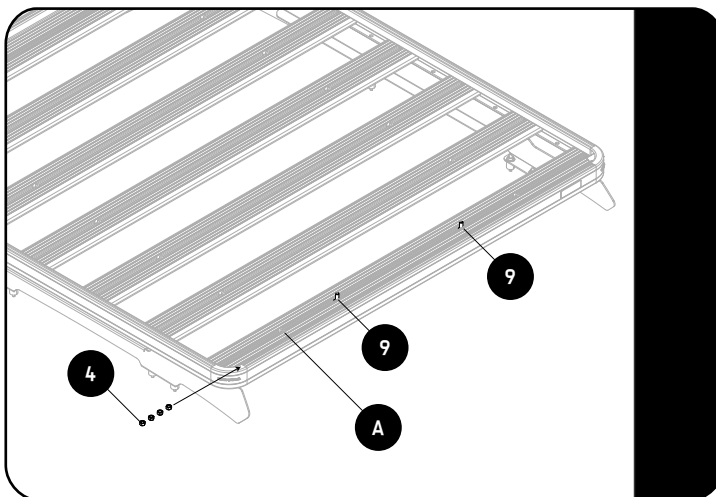
2.4



Place two M8 Nut Caps (Item 4) over the M8x16 Button Head Bolts (Item 9).

When using your ladder always position the ladder at an angle away from your vehicle so that your body weight secures the ladder in the ladder brackets.

2.5



SLII Rack Configuration - Rear Mount

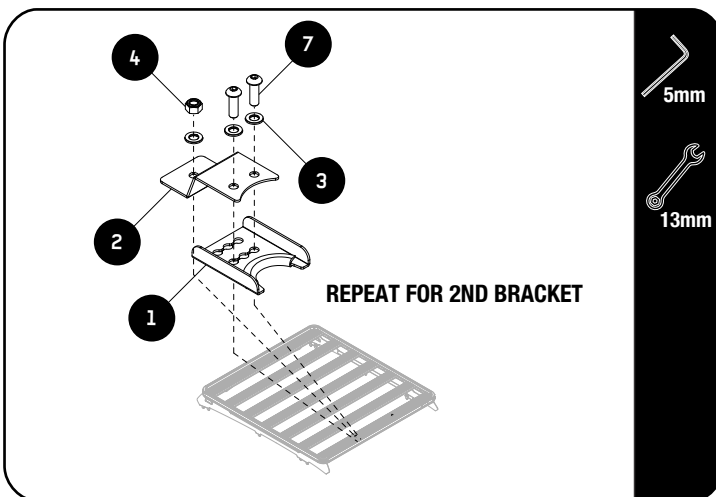


Slide two M8x16 Hex Bolts (Item 9) into the rear combined slat T-slot as shown by (A) where the ladder support brackets are to be mounted.

Slide four M8 Nyloc Nuts (Item 4) through the open pocket on the inside of the corner piece and through the slot of the side profile, with the nylon ring facing downwards.

Note: Use an Allen Key to position the M8 Nyloc Nuts (Item 4) along the side profile.

2.6



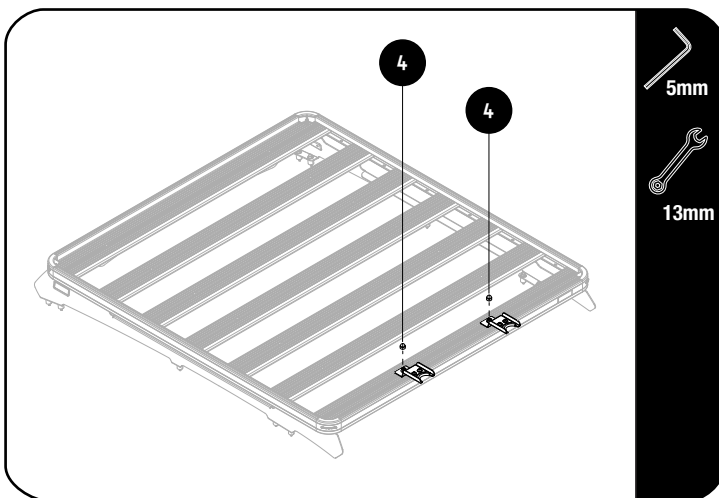
Assemble the Telescopic Ladder Bracket and the SLII Support Bracket (Item 1 & 2) as shown by loosely fitting the M8x25 Button head Bolts & M8x16x1.6 Washer (Item 3 & 7) with a Allen Key and the M8 Nyloc Nut (Item 4) so that the bracket spacing can be confirmed.

Repeat for both pairs of brackets.

2

FIT AND SECURE

2.13



Test the fitment of the Telescopic Ladder Brackets with your ladder to ensure that the bracket spacing is correct.

Fully tighten the M8 Nyloc Nuts & M8x16 Button Head Bolts (Item 4 & 6). Push two M8 Nut Caps (Item 4) over the M8x16 Button Head Bolts (Item 9).

When using your ladder always position the ladder at an angle away from your vehicle so that your body weight secures the ladder in the ladder brackets.



Tightening Torque:

M8 : 15-20Nm / 11.06 ft lb - 14.75 ft lb

3

FINISH

Congratulations! You did it. Take a step back and admire your work!

4

INSTALL OTHER VEHICLE AND RACK ACCESSORIES

Now's the time to visit your favorite Front Runner Dealer in person or online.

Be sure to tag us. We love to see our gear in action! #FrontRunnerOutfitters

Share your adventures on:

